

FIRMWARE UPGRADE

CEL-630 Series Sound Level Meter

PROC354 Rev 7

May 2021

Casella
Regent House,
Wolseley Road,
Kempston,
Bedford.
MK42 7JY
T:+44(0) 1234 844 100
F:+44(0) 1234 841 490
E: info@casellasolutions.com

Contents

Introduction.....3
Equipment required.....4
Firmware upgrade method (old hardware)5
Firmware upgrade method (new hardware).....7

Introduction

This guide is intended to guide a user through the necessary steps to upgrade the firmware on the Casella CEL-630 Series Sound Level Meter (SLM) and describes each process in a step by step manner.

If assistance is needed during any process in this guide, support can be obtained online from helpdesk.casellasolutions.com or by calling **+44 (0)1234 844100**. When contacting Casella Product Support, please reference the document number and the step number of the flow diagram or list if necessary.

The latest version of the CEL-6xx Firmware Upgrade Utility, Casella Mass DFU and CEL-630 firmware revisions can be downloaded from the Casella Website or Extranet. If a new firmware version is available, a Technical Bulletin will be released by Casella Product Support. The new version will then be uploaded to the Casella Website and Extranet for download.

This is a controlled document and is not to be amended by anyone other than Casella Product Support. Should you have any feedback or wish for any amendment to be made to this document, please contact Casella Product Support via the contact details on the cover providing the document number and change request details.



WARNING

Updating the firmware on your Casella CEL-630 SLM may erase any information stored in the unit. Please make sure you have backed up your data before attempting this procedure.

Equipment required

Before proceeding with the firmware upgrade process, please make sure you have the following equipment:

Casella CEL-630 Series Sound Level Meter



USB A to USB B Cable



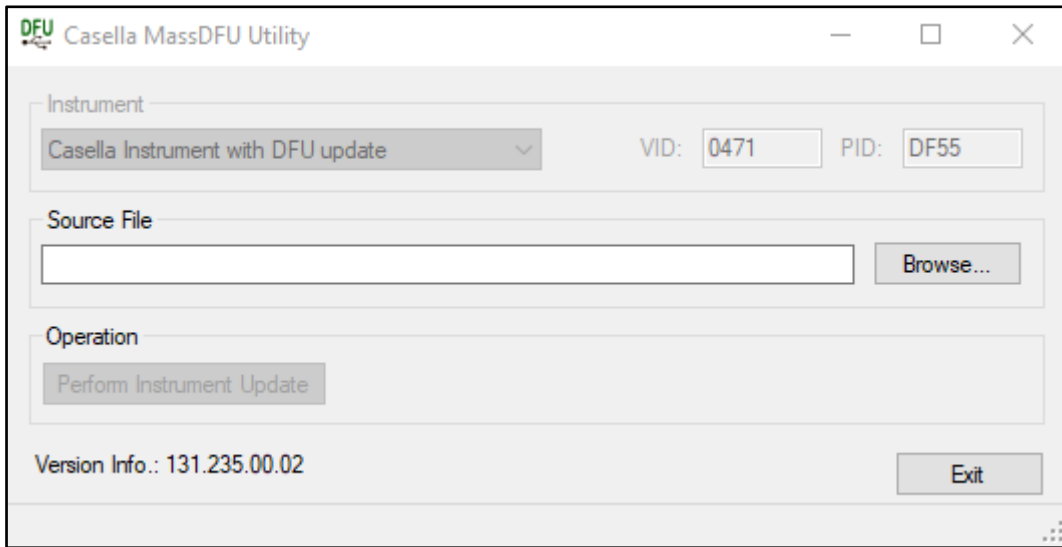
Non-Conductive Instrument



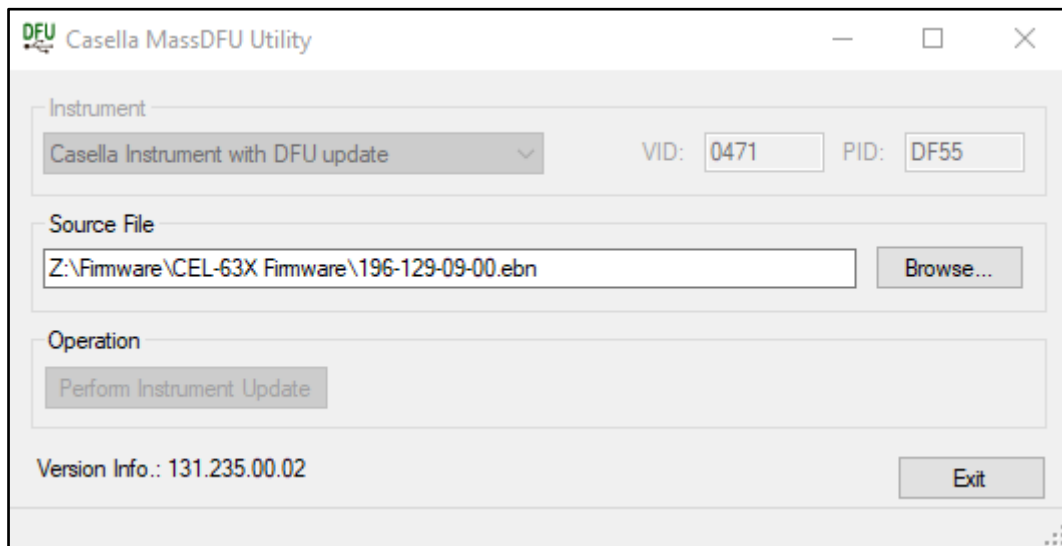
Firmware upgrade method (old hardware)

Identified by the firmware version 129-xx, this hardware version is upgraded using the following method:

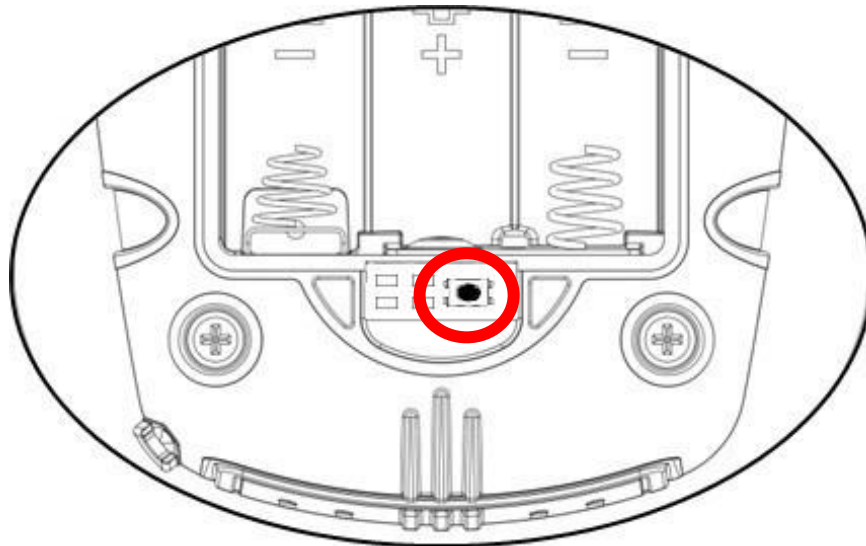
1. Download the correct version of Casella CEL-630 SLM firmware and Casella Mass DFU from the Casella Website or Extranet and save to an accessible location.
2. Install Casella Mass DFU and open the software.



3. Click 'Browse' and locate the firmware file downloaded in Step 1, then click 'Open' to select the firmware file.



4. Remove the battery cover and batteries from the instrument.
5. Connect the instrument to PC using the USB A to USB B cable.
6. Underneath the battery cover, identify the Program Mode Switch as shown below:



7. Press the Program Mode Switch using a non-conductive instrument and hold it down while simultaneously pressing and holding the instrument power button.
8. The instrument will display a black screen and the 'Perform Instrument Update' button will become useable.



9. Click 'Perform Instrument Update' to start firmware upgrade process. A small green progress bar will appear in the bottom left of the Casella Mass DFU software to show the upgrade progress.

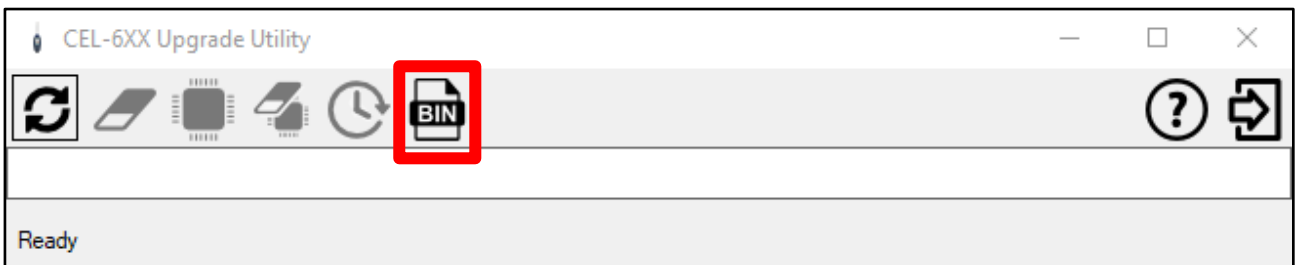
DO NOT UNPLUG THE INSTRUMENT!

10. A dialog box will confirm that the firmware upgrade is complete.
11. Power instrument off, unplug from the computer and replace the batteries and battery cover.
12. Power instrument on, upgrade is complete.

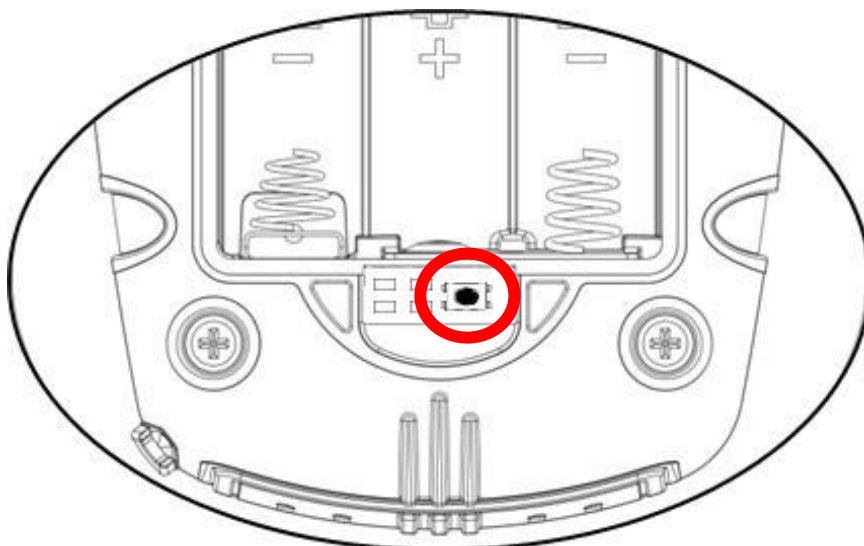
Firmware upgrade method (new hardware)

Identified by the firmware version 006-xx, this hardware version is upgraded using the following method:

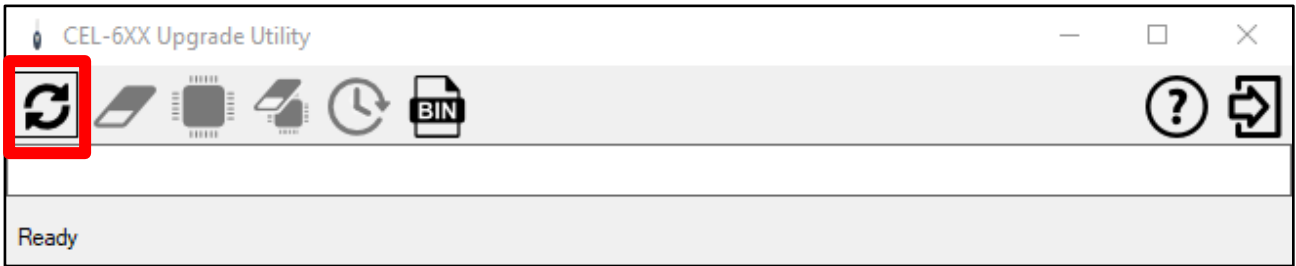
1. Download the correct version of Casella CEL-630 SLM firmware and CEL-6xx Firmware Upgrade Utility from the Casella Website or Extranet and save to an accessible location.
2. Install the CEL-6xx Firmware Upgrade Utility and open the software.
3. Click 'Select BIN File' and locate the firmware file downloaded in Step 1, then click 'Open' to select the firmware file.



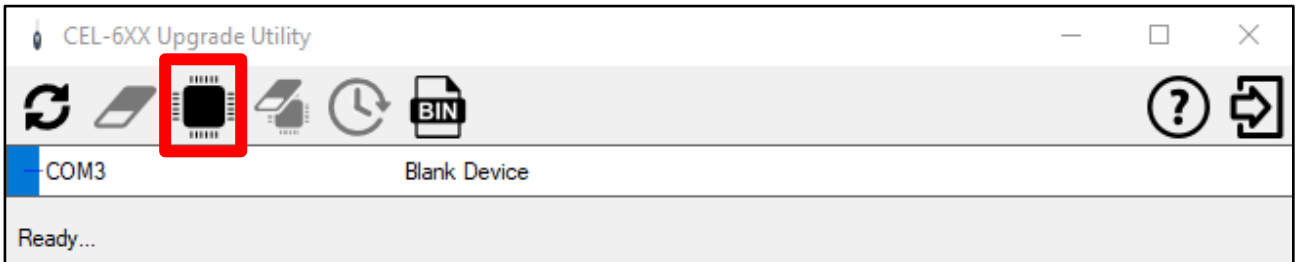
4. Remove the battery cover and batteries from the instrument.
5. Connect the instrument to PC using the USB A to USB B cable.
6. Underneath the battery cover, identify the Program Mode Switch as shown below:



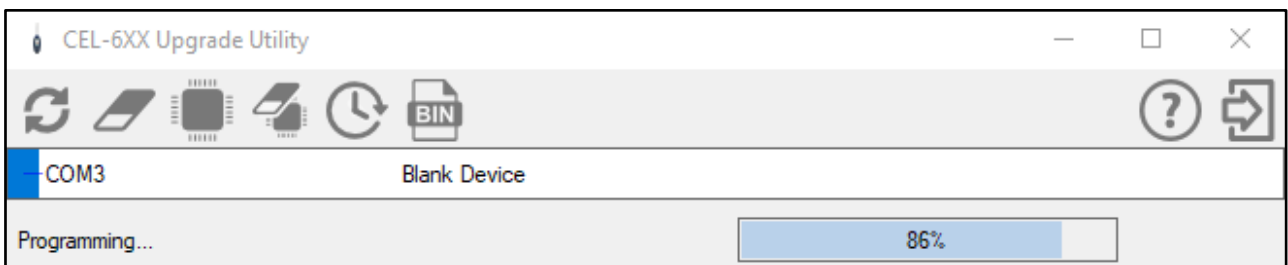
7. Press the Program Mode Switch using a non-conductive instrument and hold it down while simultaneously pressing and holding the instrument power button. Click 'Search For Devices' to locate the instrument to be upgraded.



8. Click 'Program' to start firmware upgrade process.

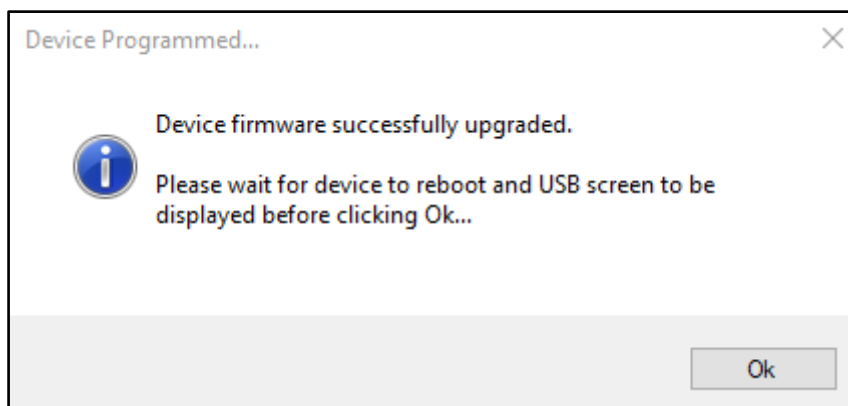


9. A progress bar will appear in the bottom right of the CEL-6xx Upgrade Utility software to show the upgrade progress.



DO NOT UNPLUG THE INSTRUMENT!

10. A dialog box will confirm that the firmware upgrade is complete.



11. Power instrument off, unplug from the computer and replace the batteries and battery cover.

12. Power instrument on, upgrade is complete.